



## Neighbourhood Partnership Review

Neighbourhood Partnerships are currently being reviewed and we would like to hear from our citizens about what they would like more control and responsibility for in their neighbourhoods, and how they would like to take part in local decision making.

We are running a public consultation as part of the review – this will take place between 1<sup>st</sup> February 2013 and 1<sup>st</sup> April 2013. There will be plenty of opportunities to take part.

To complete our online survey, go to [www.bristol.gov.uk/npask](http://www.bristol.gov.uk/npask)

The Mayor of Bristol is dedicated to giving local communities more influence over their neighbourhoods. One of the ways to do this is by encouraging communities to take more control and responsibility for their local services, instead of just having a 'one size fits all' approach taken centrally by the council.

Bristol's 14 Neighbourhood Partnerships currently make decisions about how council budgets are spent and how local services are delivered at a neighbourhood level. We want to develop our Neighbourhood Partnerships and to bring more influence and decision-making to local communities

In order to do this, we would like to hear from our citizens about what they would like more control and responsibility for in their neighbourhoods, and about how they would like to take part in local decision making.

A wide consultation is underway, with the aim to involve as many stakeholders as possible. There will be three different ways for people to get involved:

1. General survey for all citizens – this will be launched on 1st February 2013 and will run until 1<sup>st</sup> April 2013. You can complete the survey online, or fill in a paper copy and send it back to us or give it to one of your neighbourhood officers. The survey is available at [www.bristol.gov.uk/npask](http://www.bristol.gov.uk/npask) or by contacting your neighbourhood team.
2. City wide consultation meetings for NP members, councillors, forum/subgroup attendees and any other interested citizens.
3. Consultation within neighbourhoods through existing meetings, community engagement work and wider engagement. There is a programme of activities for each neighbourhood.

You can find out more by contacting the neighbourhood partnership team –  
website: [www.myneighbourhoodbristol.com](http://www.myneighbourhoodbristol.com)  
email: [neighbourhood.partnerships@bristol.gov.uk](mailto:neighbourhood.partnerships@bristol.gov.uk)  
telephone: 0117 903 6415



## Citywide consultation meetings for Neighbourhood Partnership Review

<b>Consultation Phase</b>	
13 <sup>th</sup> Feb 6.30pm – 8.30pm City Hall	Public meeting for all areas of the city
18 <sup>th</sup> Feb 6pm – 8pm Knowle West Media Centre	Public meeting – South Bristol
27 <sup>th</sup> March 6.30pm – 8.30pm, City Hall	Public meeting for all areas of the city
<b>Design Phase</b>	
10 <sup>th</sup> April 2pm – 4pm, City Hall	Councillors and residents meeting – design and quality test session for review
24 <sup>th</sup> April, 6.30pm – 8.30pm, City Hall	Councillors and residents meeting – design and quality test session for review
15 <sup>th</sup> May 6.30pm – 8pm City Hall	Final meeting for NP review before final reports produced.

### Consultation in your neighbourhood area

Each Neighbourhood Partnership area has a series of neighbourhood events that you can take part in to have your say about the neighbourhood partnership review, including forums, subgroup meetings, neighbourhood partnership meetings and other local opportunities.

Please visit [www.myneighbourhoodbristol.com](http://www.myneighbourhoodbristol.com) or contact your local area coordinator to find out more about what is happening in your area.

<b>Neighbourhood Partnership</b>	<b>Area Co-ordinator</b>
Greater Brislington NP	Ariaf Hussain - tel: 9223218 Mobile: 07810 506923 <a href="mailto:ariaf.hussain@bristol.gov.uk">ariaf.hussain@bristol.gov.uk</a>
Hengrove and Stockwood NP	Ariaf Hussain - tel: 9223218 Mobile: 07810 506923 <a href="mailto:ariaf.hussain@bristol.gov.uk">ariaf.hussain@bristol.gov.uk</a>

**Neighbourhood Partnership Consultation  
Interim Report on Online Survey (excluding iPad data)  
As at 1/3/13**

**Do you feel you know what's going on in your area?**

<b>Base</b>	<b>1398</b> <b>100.0%</b>
Do you feel you know what's going on in your area?	
<b>Yes</b>	844 60.4%
<b>No</b>	554 39.6%

**Do you attend local meetings about local issues?**

<b>Base</b>	<b>1400</b> <b>100.0%</b>
Do you attend local meetings about local issues?	
<b>Yes</b>	658 47.0%
<b>No</b>	742 53.0%

**If you don't currently what stops you?**

<b>Base</b>	<b>664</b> <b>100.0%</b>
If you don't currently what stops you? (Tick all that apply)	
Time	281 42.3%
The time of day	153 23.0%
Feel there's no point	102 15.4%
Generally happy with the way things are	103 15.5%
I know where to go if I need to get something sorted out	144 21.7%
Not interested	33 5.0%
Difficult to get there	55 8.3%
Access to the venue	19 2.9%
I don't feel welcome	49 7.4%
Don't want to attend meetings	93 14.0%
Would prefer to do it online	146 22.0%

### Have you heard of:

	Total		
		Yes	No
<b>Base</b>	<b>2764</b>	<b>2083</b> <b>75.4%</b>	<b>681</b> <b>24.6%</b>
Your local Neighbourhood Partnership?	1405	1088 77.4%	317 22.6%
Neighbourhood Forums?	1359	995 73.2%	364 26.8%

### Have you ever taken part in making decisions about local services through your:

	Total		
		Yes	No
<b>Base</b>	<b>2850</b>	<b>1164</b> <b>40.8%</b>	<b>1686</b> <b>59.2%</b>
Neighbourhood Partnership / Neighbourhood forum?	1425	536 37.6%	889 62.4%
Other local meetings?	1425	628 44.1%	797 55.9%

### If you attend neighbourhood partnership / neighbourhood forums/local meetings, what do you like about them?

<b>Base</b>	<b>622</b> <b>100.0%</b>
If you attend neighbourhood partnership / neighbourhood forums/local meetings, what do you like about them?	
Finding out what's going on in my area	521 83.8%
Being able to speak to service providers	411 66.1%
Hearing about what's going on in the area	450 72.3%
Influencing what happens in the area	417 67.0%
They are well organised	238 38.3%
My concerns are taken seriously	255 41.0%

**If you attend neighbourhood partnership / neighbourhood forums/local meetings, how do you think that forums and other local meetings could be made better?**

	<b>Base</b>	<b>623</b>	<b>100.0%</b>
If you attend neighbourhood partnership / neighbourhood forums/local meetings, how do you think that forums and other local meetings could be made better?			
Link them to other groups meeting in the area		257	41.3%
Better links to community run groups		254	40.8%
Vary the subjects discussed to include other issues		192	30.8%
Better advertising		366	58.7%
More action on the issues of concern		247	39.6%
Better resolution of issues		205	32.9%
Better feedback on results		257	41.3%
Better organised		126	20.2%
Hold them at different times of the day		173	27.8%
Other		87	14.0%

**Neighbourhood Partnerships make decisions about highways budgets, environment and parks budgets, influencing contracts, small grants and choosing priorities for neighbourhood officers to work on?**

	<b>Total</b>	<b>Yes</b>	<b>No</b>
<b>Base</b>	<b>2733</b>	<b>2118</b>	<b>615</b>
		<b>77.5%</b>	<b>22.5%</b>
Were you aware of this?	1383	831	552
		60.1%	39.9%
Do you think it is a good idea for local people to be involved in these decisions?	1350	1287	63
		95.3%	4.7%

### Do you think enough decisions about council services are made locally?

	<b>Base</b>	<b>1327</b> <b>100.0%</b>
Do you think enough decisions about council services are made locally?		
	Yes	339 25.5%
	No	988 74.5%

### Would you like to be involved/continue to be involved in local decision-making?

	<b>Base</b>	<b>1279</b> <b>100.0%</b>
Would you like to be involved/continue to be involved in local decision-making?		
	Yes	784 61.3%
	No	495 38.7%

### How would you like to be involved in local decision-making? (Tick all that apply)

	<b>Base</b>	<b>1160</b> <b>100.0%</b>
How would you like to be involved in local decision-making?		
	Attending meetings	651 56.1%
	Online	753 64.9%
	Through existing community groups	507 43.7%
	Through local events	503 43.4%
	Through outreach to places that I go regularly eg playgroups, youth clubs, networking meetings.	289 24.9%

## What is the best time / day to have community meetings?

	Base	1216	100.0%
What is the best time / day to have community meetings?			
Evening meetings		584	48.0%
Daytime meetings		164	13.5%
Mixture of times		540	44.4%
Weekend		161	13.2%
Weekday		270	22.2%
Mixture of days		433	35.6%

**How do you find out information about your neighbourhood? (Tick all that apply)**

<b>Base</b>	<b>1352</b>
	<b>100.0%</b>
How do you find out information about your neighbourhood?	
Council website	441 32.6%
Local websites	305 22.6%
Social media (Facebook / twitter / etc)	245 18.1%
Email bulletins	435 32.2%
Local Newsletters	695 51.4%
Newspapers	370 27.4%
Local notice boards on streets	412 30.5%
Notice boards in shops / supermarkets / post office	280 20.7%
Library	265 19.6%
Word of mouth	796 58.9%
Community buildings	263 19.5%
Places of worship	108 8.0%
Asking the council	91 6.7%
Neighbourhood Partnership / Neighbourhood Forum	443 32.8%
Other	135 10.0%



## Equality Profile of Respondents

	Base	Age			
		Under 18	18 - 65	Over 65	Prefer not to say
	<b>1400</b> <b>100.0%</b>	32 2.3%	942 67.3%	398 28.4%	28 2.0%

	Base	Gender		
		Female	Male	Prefer not to say
	<b>1372</b> <b>100.0%</b>	825 60.1%	517 37.7%	30 2.2%

	Base	Transgender		
		Yes	No	Prefer not to say
	<b>921</b> <b>100.0%</b>	13 1.4%	802 87.1%	106 11.5%

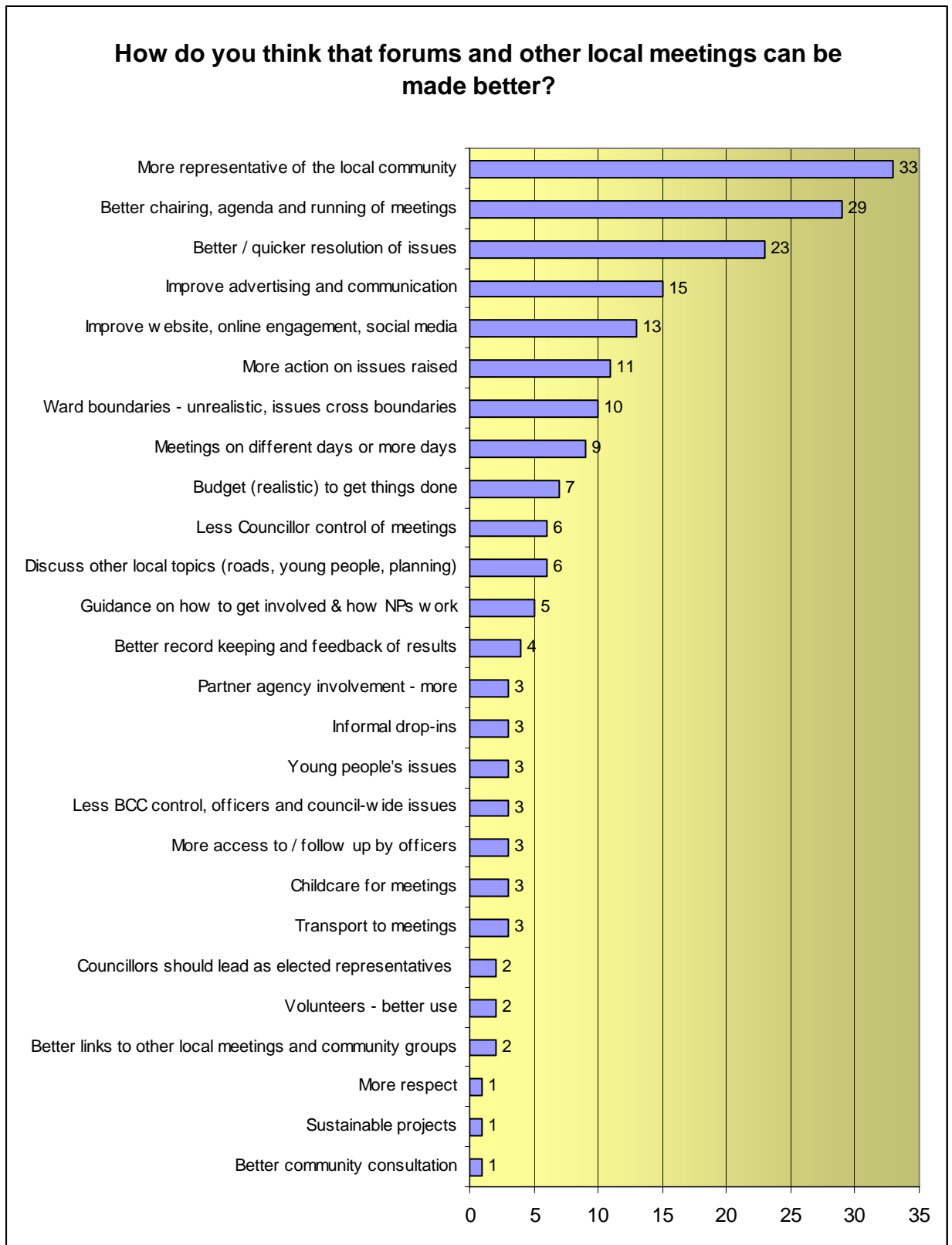
	Base	
	<b>1360</b> <b>100.0%</b>	
<b>Ethnicity</b>		
White British background	1072 78.8%	
Other White background	73 5.4%	
Black and minority ethnic background	117 8.6%	
Prefer not to say	98 7.2%	

	Base	
	<b>1344</b> <b>100.0%</b>	
<b>Religion / Belief. Do you have a religion / belief?</b>		
Yes	659 49.0%	
No	503 37.4%	
Prefer not to say	182 13.5%	

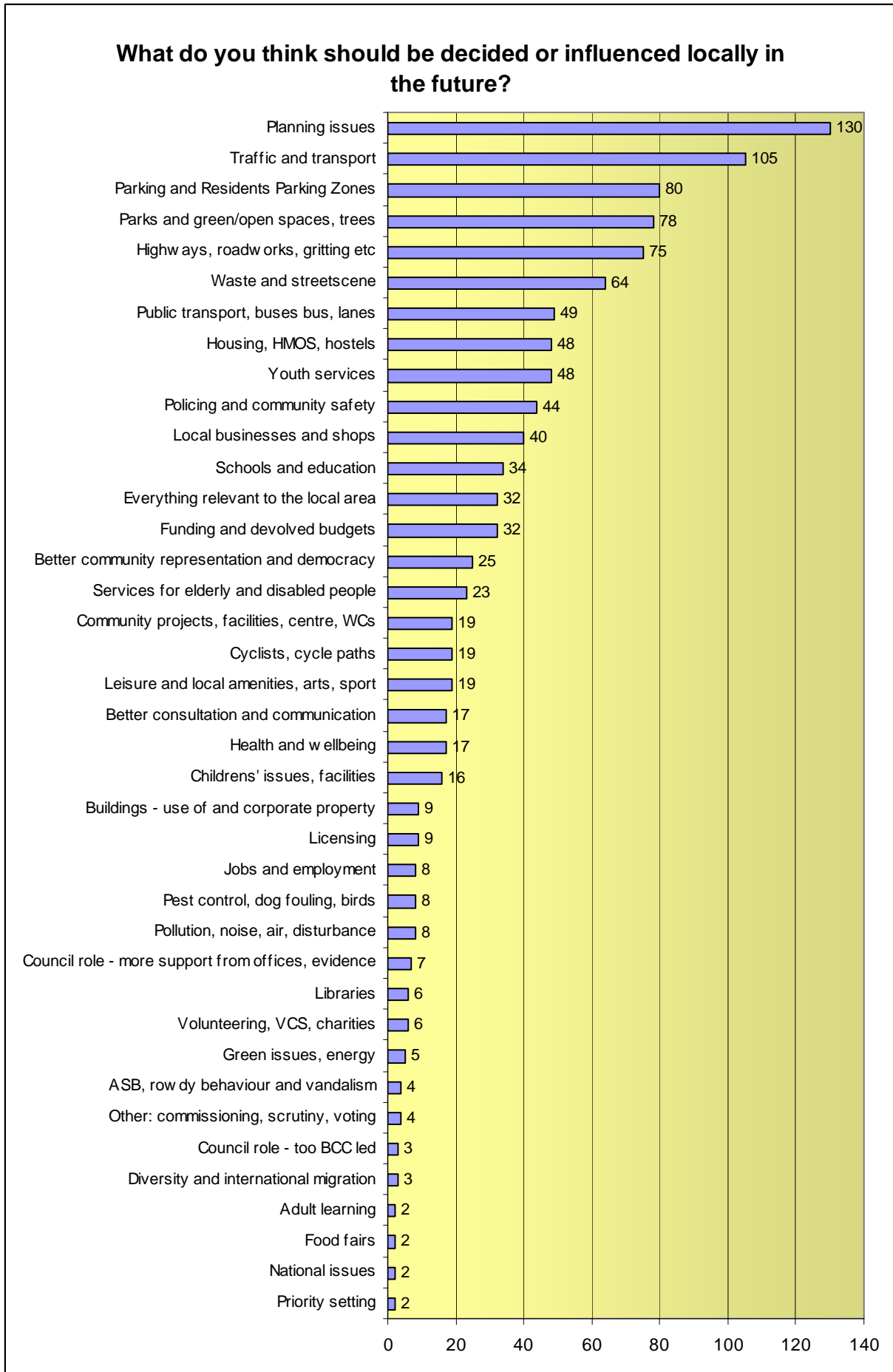
	Base	
	<b>1382</b> <b>100.0%</b>	
<b>Disability. Are you disabled?</b>		
Yes	182 13.2%	
No	1104 79.9%	
Prefer not to say	96 6.9%	

	<b>Base</b>	<b>1316</b> <b>100.0%</b>
<b>Sexual orientation. Are you</b>		
Lesbian, gay or bisexual		41 3.1%
Heterosexual (straight)		1077 81.8%
Prefer not to say		198 15.0%

**As at 1-3-13: Themed responses to Question 8 (168 comments):**

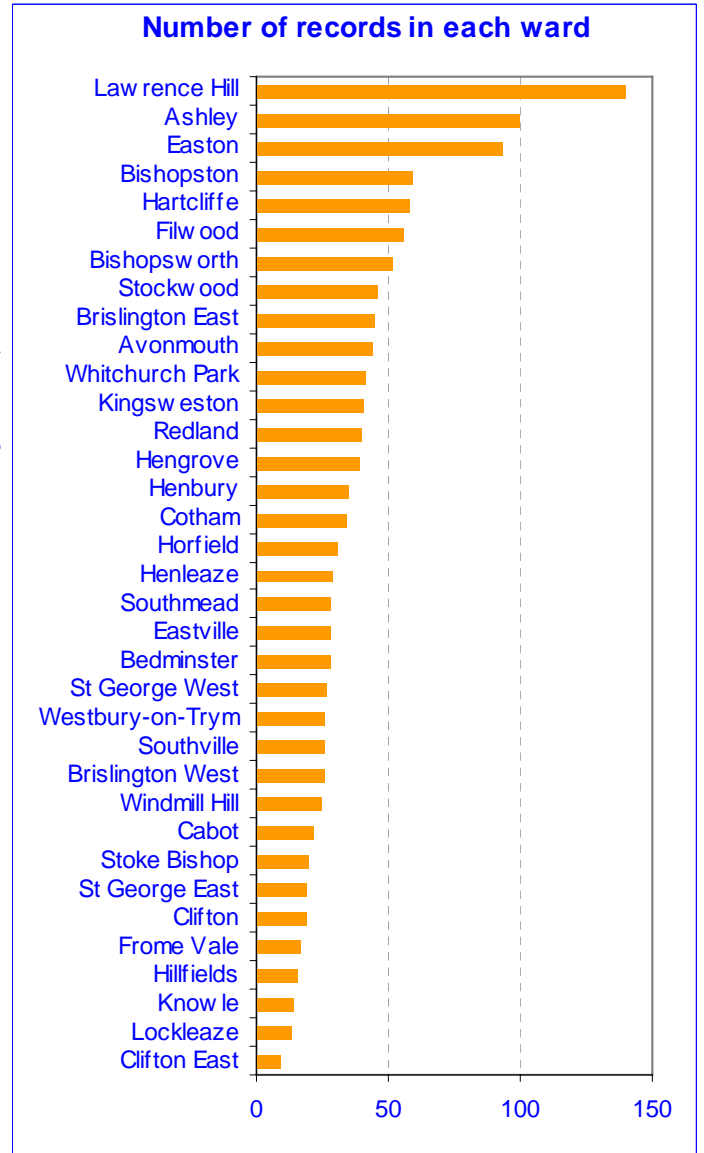
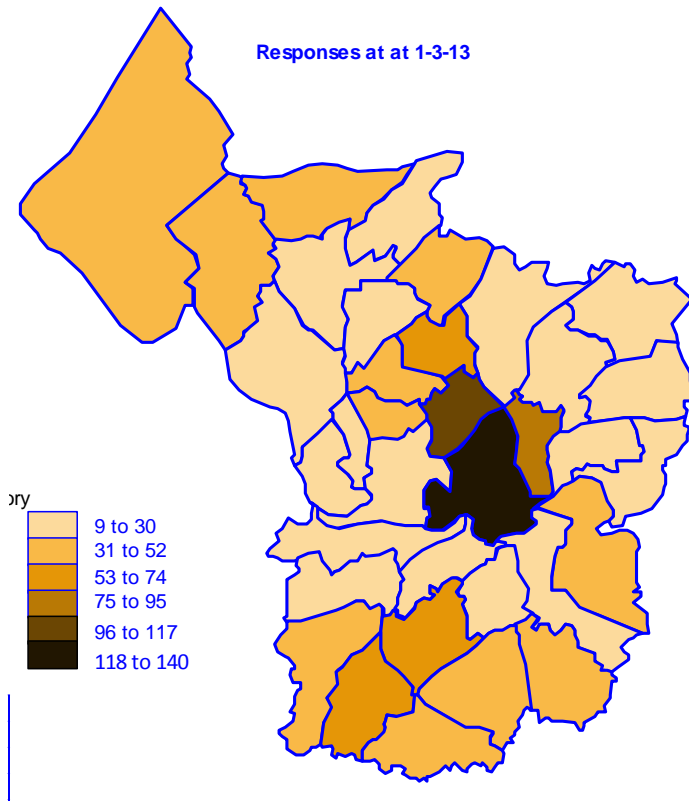


**As at 1-3-13: Themed responses to Question 11 (745 comments):**



# NP Consultation Online Survey Response by Postcode as at 1-3-13

## By Ward



## By Neighbourhood Partnership Area

